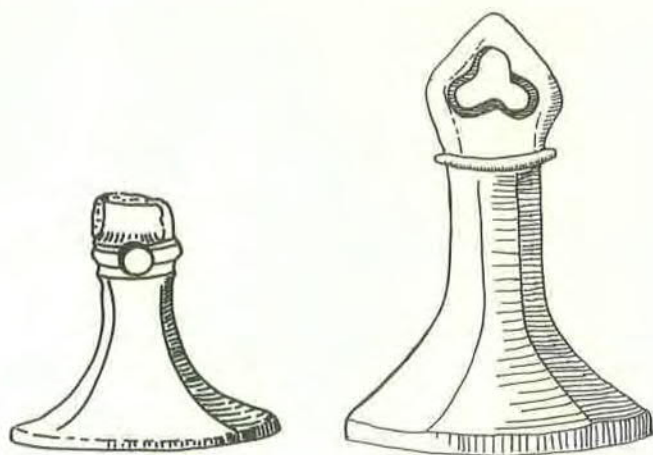


RECORDS OF BUCKINGHAMSHIRE



Volume 33 1991 (Published 1993)



Two fourteenth-century seals, used for letters between lovers,
found in the Aylesbury area. (See page 140).

RECORDS OF BUCKINGHAMSHIRE

BEING THE JOURNAL
OF THE ARCHITECTURAL AND
ARCHAEOLOGICAL SOCIETY FOR THE
COUNTY OF BUCKINGHAM

Edited by
JOHN CHENEVIX TRENCH, FSA
Associate Editor
M. E. FARLEY, FSA

VOLUME 33
1991

BUCKS ARCHAEOLOGICAL SOCIETY
CHURCH STREET, AYLESBURY

ISSN 0967 - 2885

CONTENTS

The County Museum Buildings, Church Street, Aylesbury <i>John Chenevix Trench, FSA & Pauline Fenley, BA, FSA.</i>	1
New Discoveries of Penn Tiles <i>Pauline Cauvain & Stanley Cauvain, MSc, AIFA.</i>	44
The Milton Keynes Project <i>R. J. Zeepvat, BA, MIFA</i>	49
Halton in the Eleventh Century <i>Arnold H. J. Baines, MA, Phd, FSA, FRHist Soc, FRSA, FSS</i>	64
Buckinghamshire Churches in the Eighteen Forties <i>Elliott Viney, FSA</i>	68
Investigations at Danesfield Camp, Medmenham, Buckinghamshire <i>Graham D. Keevill, BA (Hons), MIFA & Gregory E. Campbell, BSc</i>	87
Archaeological Evaluation at Three Locks Golf Course, near Great Brickell, Buckinghamshire <i>Carrie M. Hearne, BA, AFIA</i>	100
A Survey of Prehistoric and Later Earthworks on Whiteleaf Hill, Princes Risborough, Buckinghamshire <i>Julia Wise, BA</i>	108
Ravenstone Priory: the Church Located <i>Michael Faeley, BA, MIFA, FSA</i>	114
A Medieval Settlement at Fillington Wood, West Wycombe <i>R. F. Parker, BA & A. W. F. Boarder</i>	128
Notes:	
‘Love and Kisses’ in the Fourteenth Century	140
Dachet: Some Afterthoughts	141
A Late Bronze Age Sickle from Great Kimble, Buckinghamshire	142
In the House of Richard Toms	145
New Evidence for Anglo-Saxon Activity at Newport Pagnell	145
Archaeological Notes	148
Reviews	154
The Society	159
Natural History Section	161
The Museum	163
County Records Office	164
Officers of the Society	166