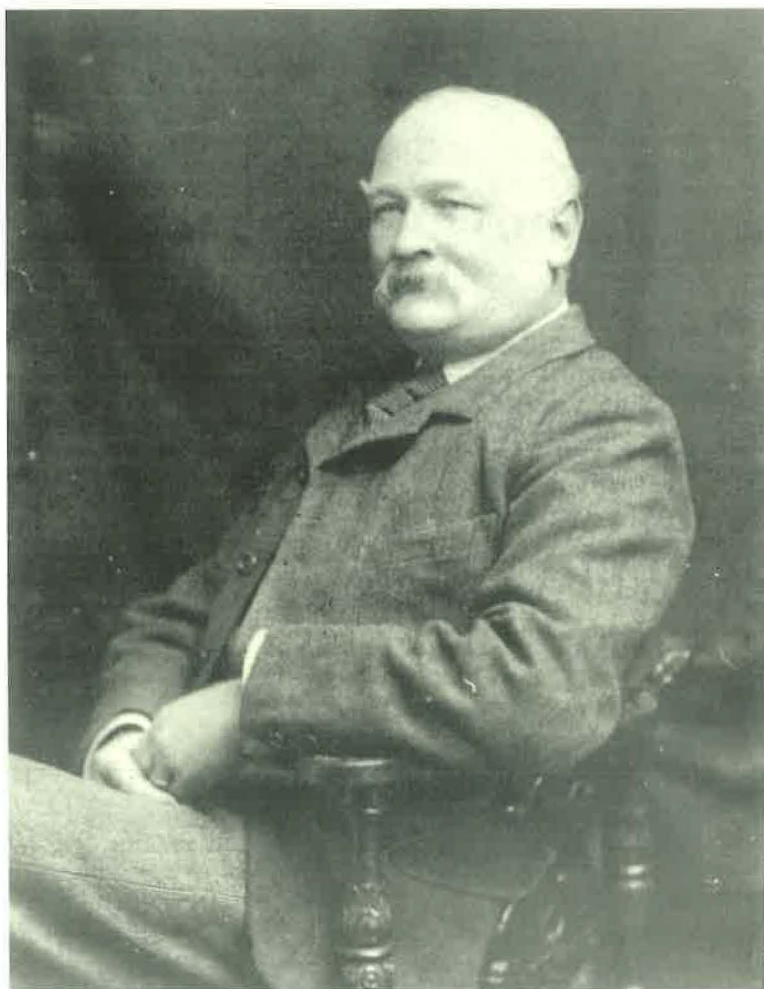


RECORDS OF BUCKINGHAMSHIRE



Volume 32 1990

Including Index to Vols 29–32



E. J. Payne, Recorder of High Wycombe.
See 'A Buckinghamshire Polymath', p. 120.

RECORDS OF BUCKINGHAMSHIRE

BEING THE JOURNAL
OF THE ARCHITECTURAL AND
ARCHAEOLOGICAL SOCIETY FOR THE
COUNTY OF BUCKINGHAM

Edited by
JOHN CHENEVIX TRENCH, FSA
Associate Editor
M. E. FARLEY, FSA

VOLUME 32
1990

BUCKS ARCHAEOLOGICAL SOCIETY
CHURCH STREET, AYLESBURY

ISBN 0 949003 06 9

CONTENTS

The Hidation of Buckinghamshire <i>Keith Bailey MA</i>	1
A Fifteenth-Century Pottery and Tile Kiln at Leyhill, Latimer, Buckinghamshire <i>Michael Farley, BA, MIFA, FSA & Jo Lawson BA</i>	35
Wynflæd v. Leofwine: a Dacet Lawsuit of 990 <i>Arnold H. J. Baines, MA, PhD, FSA, FRHistSoc, FRSA, FSS</i>	63
The Coprolite Industry in Buckinghamshire <i>Bernard O'Connor</i>	76
Coldhabour Farm, Aylesbury, an Archaeological Investigation <i>Ian J. Stewart, BA</i>	91
The Puzzle of the Priestly Effigy in Ivinghoe Church <i>R. P. Hagerty, PhD</i>	105
A Buckinghamshire Polymath: Edward John Payne <i>John Catch, BSc, Phd</i>	120
The Conservation of the Reynes Monuments and Font at Clifton Reynes <i>N. J. Berrel LDA, RCS Eng</i>	130
Sir Albert Richardson in Wendover: a Microcosm of an Architectural Career <i>Ian Toplis, PhD, DipArch, RIBA</i>	137
Archaeological Notes	147
Notes:	
A Lost White Horse on Pitstone Hill?	151
Two Medieval Seals	151
An Early Nineteenth-century Ice House in Hedgerley Park	152
Two Geological Sites in the North Buckinghamshire Area	155
The Museum	158
County Record Office	159
Reviews	160
The Society	162
Natural History Section	163
Officers of the Society	165
Index to Vols. 29–32	166